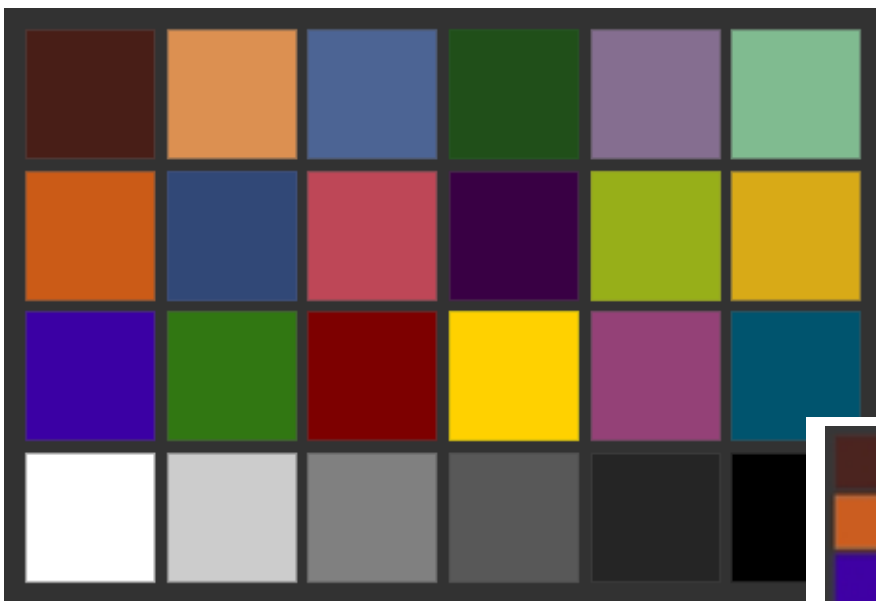


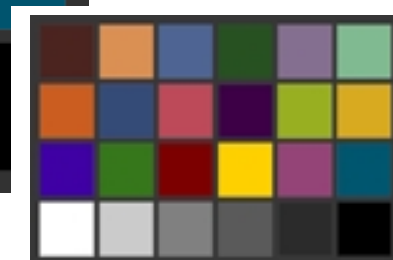


The GretagMacbeth ColorChecker colour rendition chart.

A 4 x 6 array of 50mm coloured squares for calibrating and evaluating colour reproduction systems. At 292mm by 216mm, the ColorChecker chart is proportioned to fill a 35mm frame. The "Mini" ColorChecker chart is similarly proportioned, but at just 83mm by 57mm.



ColorChecker Chart.
Part No. 50105



Mini ColorChecker Chart.
Part No. 50111

The GretagMacbeth ColorChecker chart provides you with an easy way to recognise and evaluate the many factors that can affect colour reproduction.

To evaluate the affect of varying any given factor, you simply compare the chart's colour image – photograph, television picture, CRT display or printed sample – with the actual ColorChecker. This comparison may be made visually, or through measurements of optical density.

Patches :

Dark Skin	Light Skin	Blue Sky	Foliage	Blue Flower	Bluish Green
Orange	Purplish Blue	Moderate Red	Purple	Yellow Green	Orange Yell.
Blue	Green	Red	Yellow	Magenta	Cyan
White	Neutral 8	Neutral 6.5	Neutral 5	Neutral 3.5	Black



Sales

Service Training

**Applications and technical support
for Australia and New Zealand.**

GretagMacbeth products are proudly supported by:

**Colourspec Pty. Ltd.
Unit 1, 6 Commercial Court,
Tullamarine, Victoria, 3043
Australia**

TEL	+61 3 9335 1525
FAX	+61 3 9335 1915
WEB	www.colourspec.com.au
Email	info@colourspec.com.au